

DiskImager User Guide

All basic info about DiskImager can be found in README file.

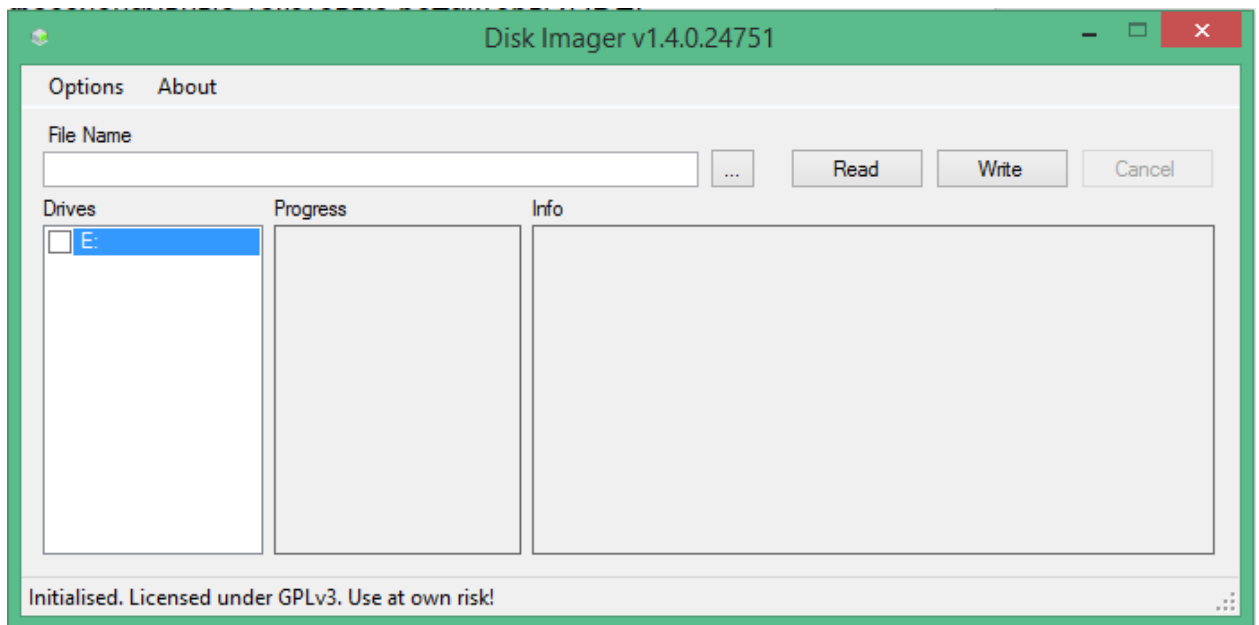
Contents

- **Creating a backup copy of SD card/USB stick**
- **Restoring a SD card/USB stick from backup image**
- **Troubleshooting, additional information & links**

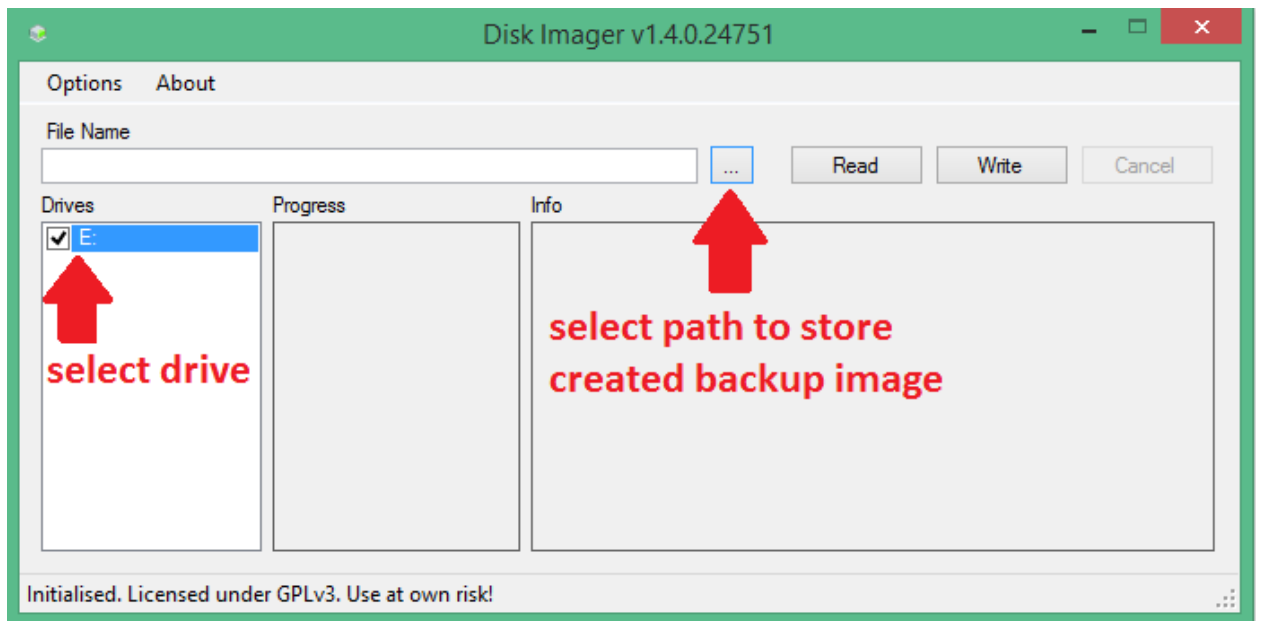
Creating a backup copy of SD card/USB stick

In this tutorial I will be using SD card with firmware for TRIK robot which I want to back up to `.img` file zipped in XZ archive.

Plug in Your computer the SD card/USB stick you would like to back up. Then, open the DiskImager. You will see main window of a program.

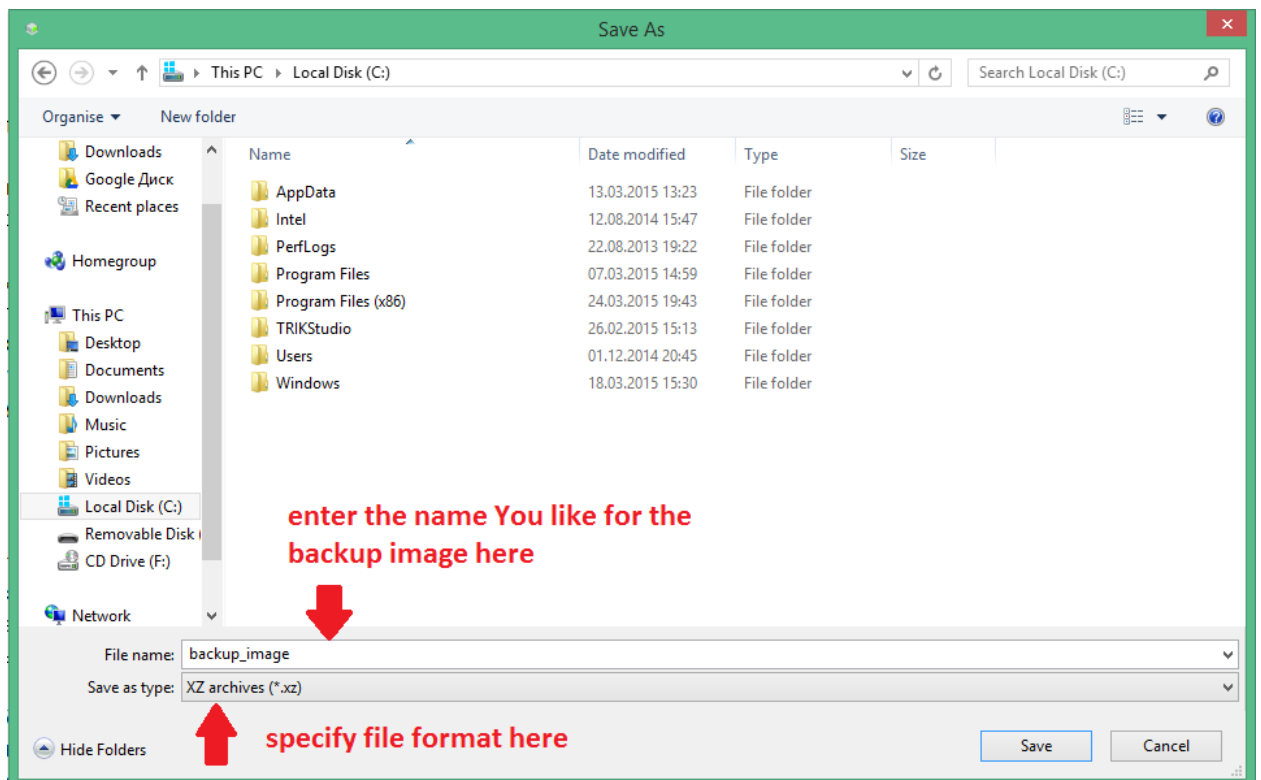


- Select the drive that You want to back up.
- After selecting a drive press `...` button to bring up dialog where You can choose a path and name for backup image that would be created.

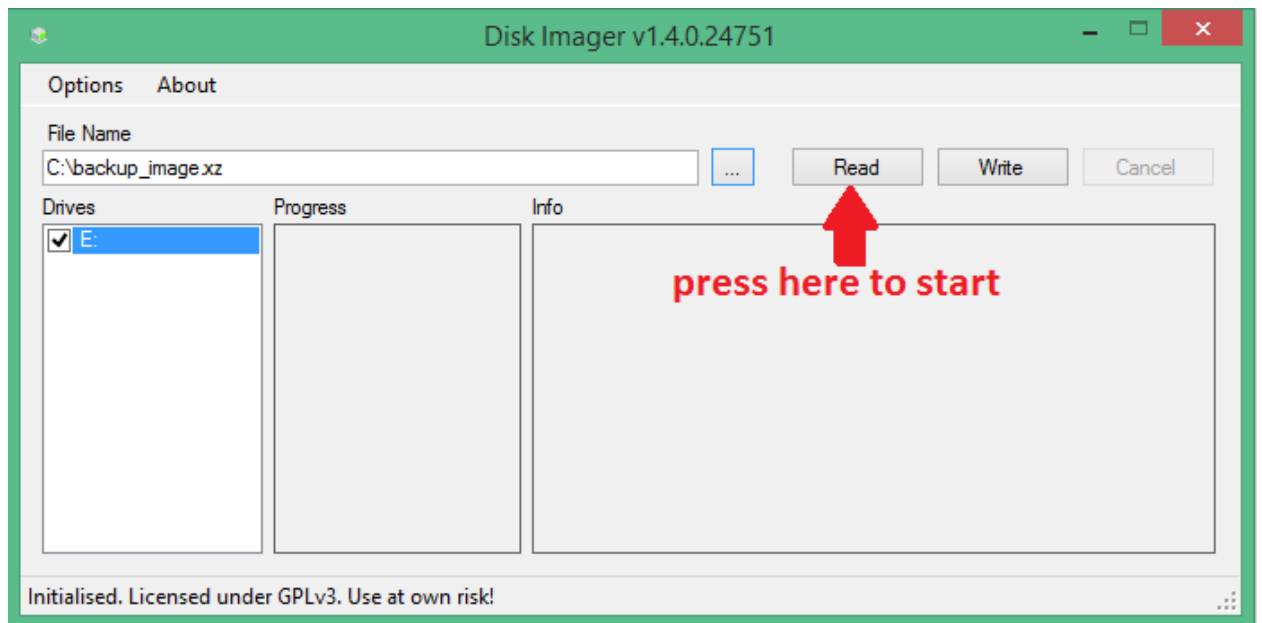


- Specify directory (it is a simple Windows file explorer dialog, so navigate as usual to a folder You like), name and file type for your backup image.

Note: if you do not know which file type to choose, select XZ archive, because the resulting image will take less disk space on your computer.



- Press `Read` button to start backing up.



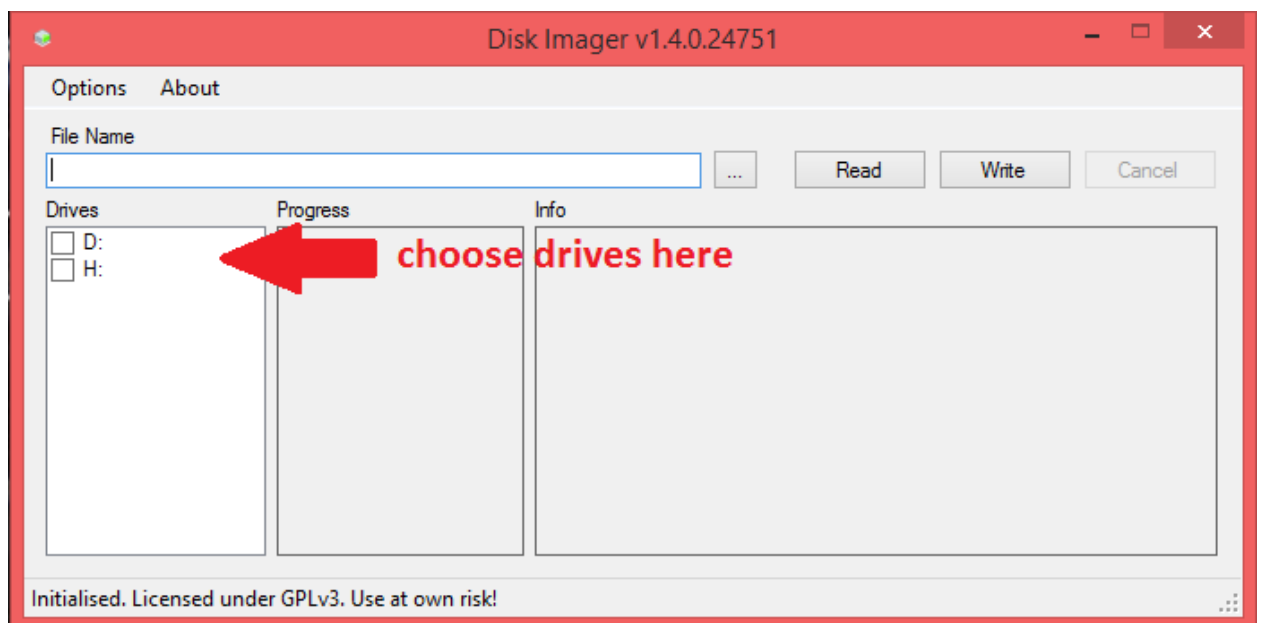
- Wait until utility performs requested operation.

Restoring a SD card/USB stick from backup image

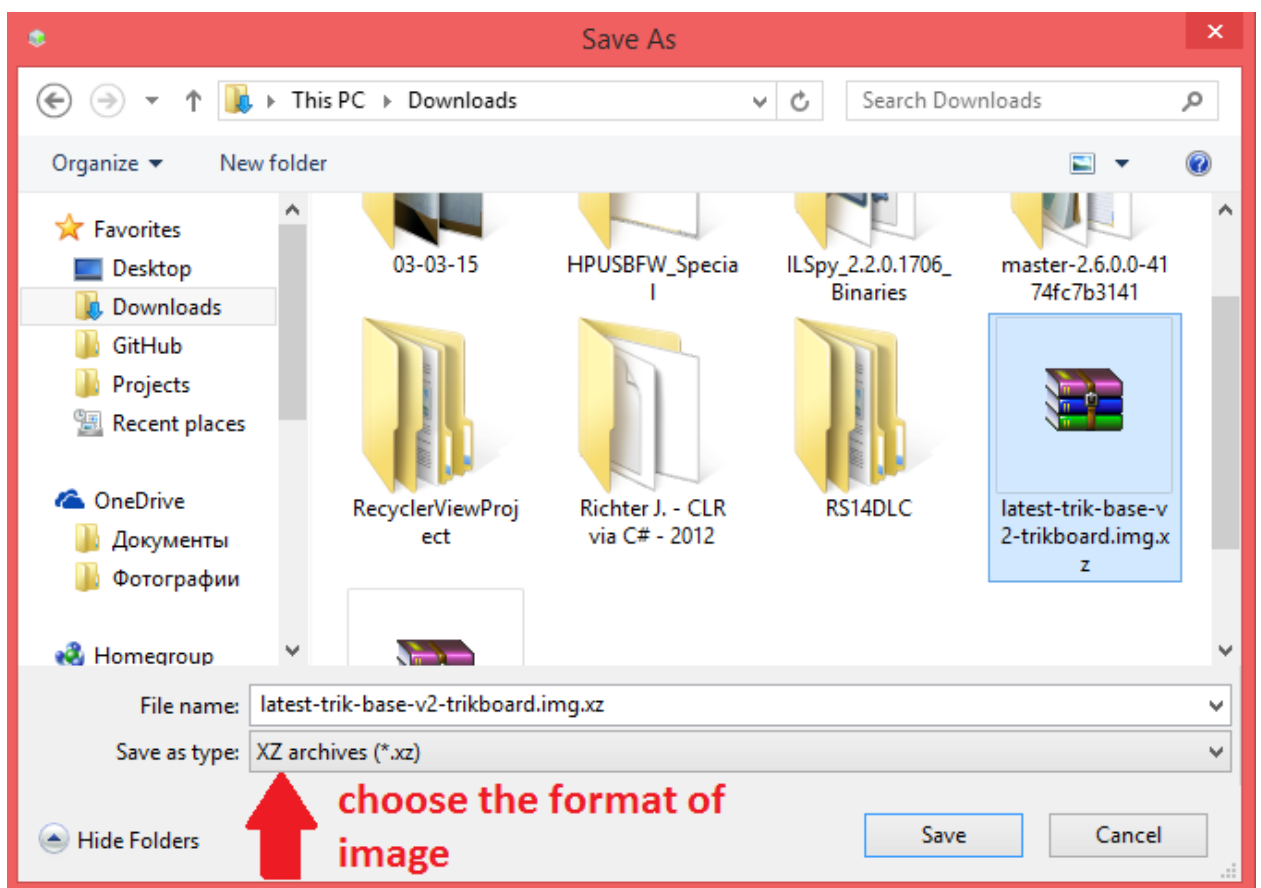
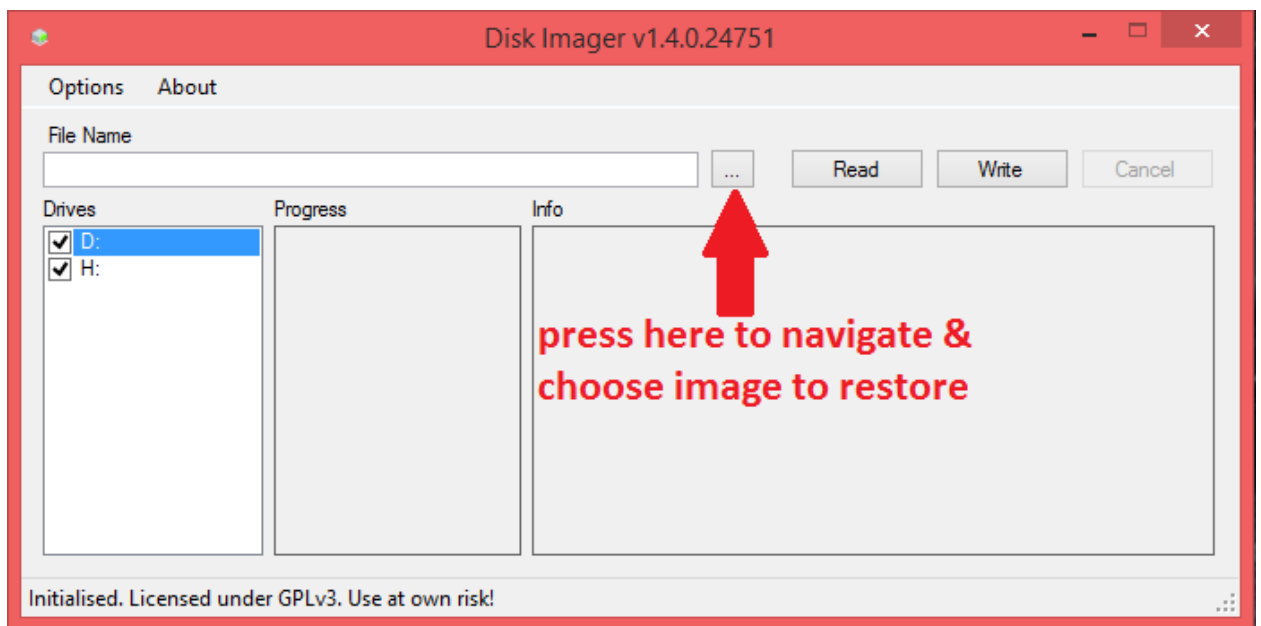
In this tutorial, as an image, I will be using firmware for TRIK robot, which is `.img` file zipped in XZ archive.

Plug in Your computer the SD card/USB stick you would like to restore from your image. Then, open the DiskImager. You will see main window of a program.

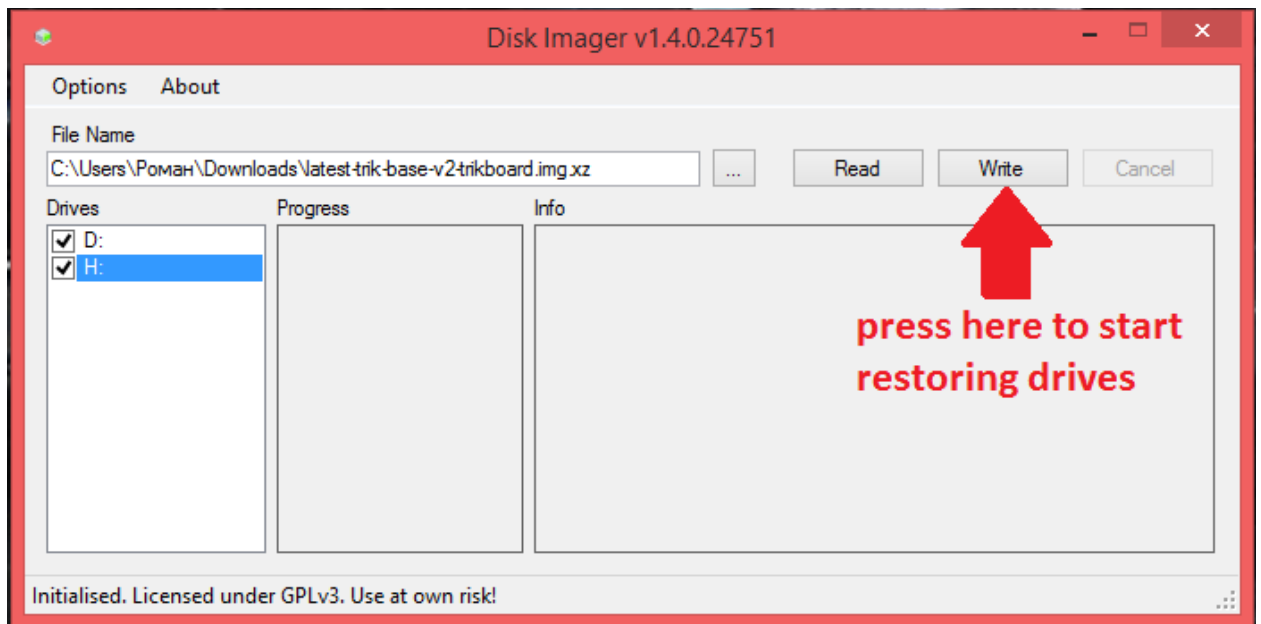
- Choose the drives You want to restore



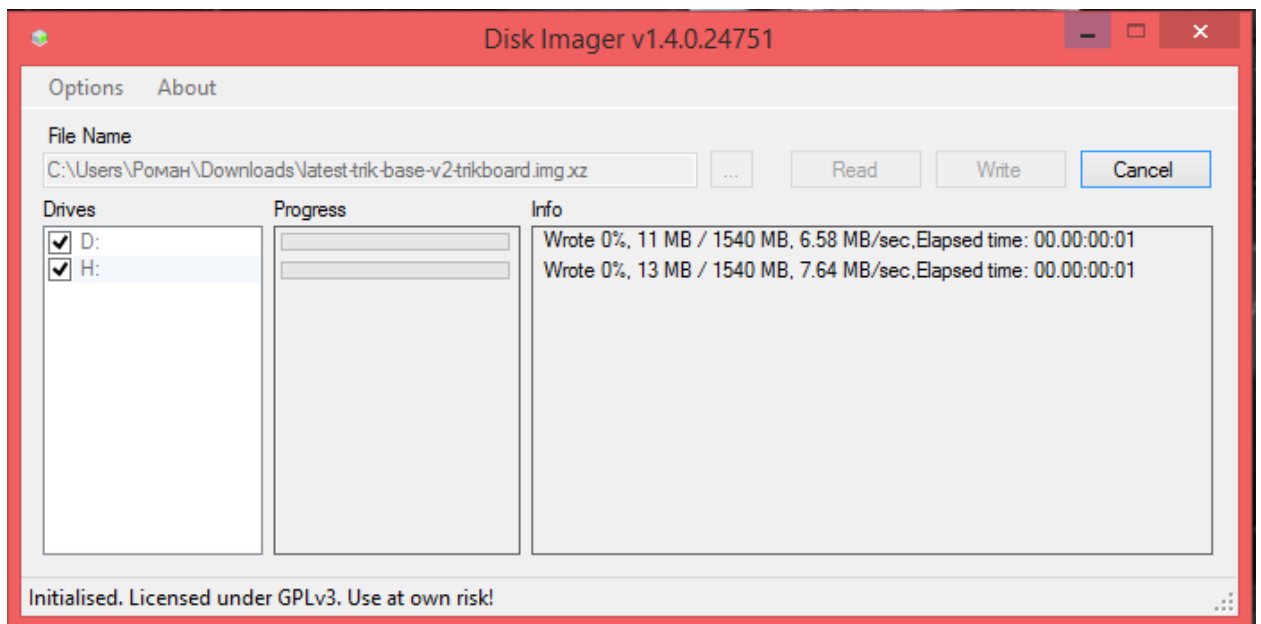
- Press `...` button to bring up dialog where You will be asked to choose a backup image. You can choose filter in the bottom of the dialog to set up extension filter.



- Press **Write** button to start restoring from backup.



- Wait until utility performs requested operation.



Troubleshooting

Question: I have plugged my SD card/USB stick in my computer, but DiskImager does not show it as available in the list of drives.

Answer: You can check out **Display all drives** in **Options** menu to show all drives attached to Your computer. **Be careful when turning this option on because it is possible to damage the data on Your main HDD if You accidentally pick it as a drive to read or write**. If it still would not be listed, You should check consistency of this drive.

Additional information

There are two options available at your choice at the `Options` menu

- `Use MBR sizes` allows you to read only data that is written in allocated MBR partitions. **By default this option is on, but You can turn it off to get a complete backup of Your drive.**
- `Unmount drives after write` safely removes drives from the system so You can unplug them after write without caring about data losses. **By default this option is on, but You can turn it off if You want to perform some operations with drives after writing image on them.**